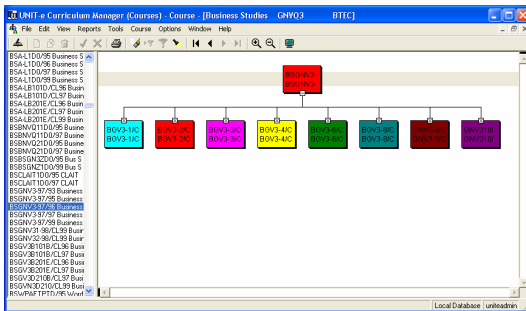




UNIT-e Student Records Tracking Solution (SRTS) Curriculum Manager

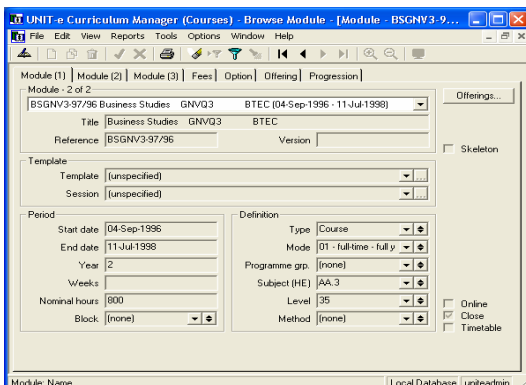
The flexible and intuitive curriculum planning and creation tool.

What does it do?



Curriculum Manager gives the college the ability to define its own unique curriculum structure. It is totally flexible and driven from the college's academic requirements. The curriculum can be modelled using a graphical user interface that allows experimentation before a final model is approved.

It can accommodate various curriculum models concurrently, allowing the college to truly reflect its business from basic skills to degree programmes. It is compliant with the data collection and reporting requirements for all statutory bodies in England, Wales, Scotland and Northern Ireland. Curriculum tools also allow you to rapidly set-up the new years curriculum structure based on the previous year and will automatically revise start and end dates.



Key Benefits

- **Simple:** an intuitive graphical interface and a unique 'drag and drop' feature which understands the structure of the curriculum elements.
- **Flexible:** the module concept allows you to model any curriculum structure you require, which can have an unlimited hierarchy and can share both higher and lower components.
- **Powerful:** the rollover and balancing tools give you the power to tackle complex and time consuming tasks.



the total education management solution