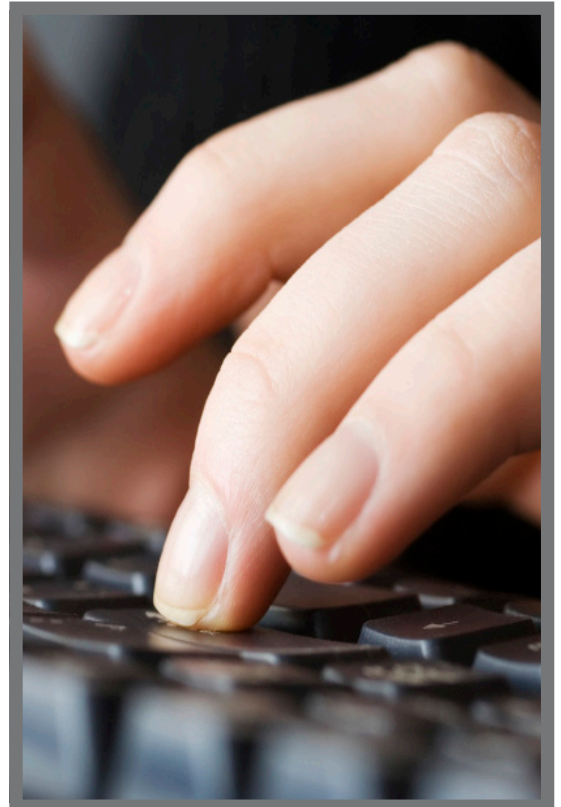


CAPITA

UNIT-e Business Manager

Powerful and flexible curriculum planning and analysis tools at your fingertips

UNIT-e Business Manager: *the* total planning, claim and funding analysis tool, providing complete management of the learner funding process



Capita Business Manager can help you with the planning, forecasting and management of your programmes and funding year-on-year

- **Does your organisation undertake curriculum planning in the most efficient and accurate manner?**
- **Can you be sure that your planning practices are as robust and reliable as possible?**
- **Would you like to self-regulate more effectively?**
- **Would you like to see easily all the data you require to make effective decisions?**
- **Would you like to increase your course provision but have problems ensuring the additional funding will meet the costs?**

It is a widely recognised fact that "proper planning prevents poor performance". Effective and accurate curriculum planning is the backbone, and often headache, of every educational organisation. Without this vital activity taking place, chaos would ensue and funding would not be achieved. However, it is definitely not a straightforward process to undertake, but one that must take place in a yearly cycle.

UNIT-e Business Manager from Capita Further and Higher Education is a new software suite that removes the pain, inaccuracies and inefficiencies of the curriculum planning process, within a single comprehensive solution. The production of UNIT-e Business Manager has been a total redevelopment of the planning software within the UNIT-e suite, enabling it to reflect the current funding environment and structured to respond rapidly to the ever-changing formula funding models.

From within the established UNIT-e suite of programs, Business Manager enables organisations to undertake the curriculum planning process with a more efficient and reliable approach. By utilising existing data within the UNIT-e information management system, all planning estimates reside in the same database as the actuals when both your new and returning learners enrol.

Additionally, with the anticipated income data residing in this system, your organisation can accurately set the expected costs for a course, both at the level of the individual learner and the teaching group.

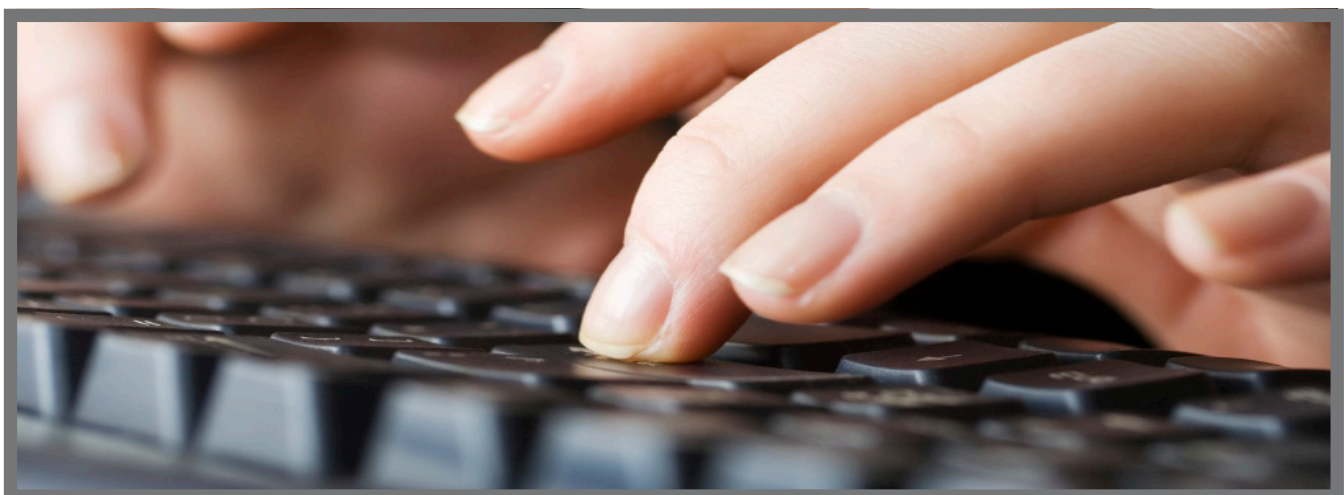
Key benefits - Business Manager enables your organisation to:

- Increase speed of planning process for educational organisations
- Improve net funding of your organisation
- Eliminate duplication of data entry – reports use pre-existing information and will write straight back to the UNIT-e management system
- Reduce planning period
- Ensure business continuity and reliance on islands of information with structured, consistent approach to curriculum planning
- Optimise the curriculum for maximum performance against targets, adhering to both local and national objectives
- Eliminate need to install or learn a separate software operation
- Reduce resources needed across multiple departments due to inaccurate data.

Ease your organisation's planning headaches, plan accurately and analyse your claims all within one system

Key functionality:

- Fully integrated with the UNIT-e solution removing the requirement for costly in-house integration between core business critical systems and providing the information store in one location
- Flexible and powerful curriculum planning and reconciliation process
- Unites disparate data held in various locations, in varying formats and versions
- Forecasts funding to be received
- Manages funding and data
- Monitors plans against the actuals within the same environment
- Models funding for your organisation as a whole, or by departments, to understand the bigger picture and identify areas of growth
- Models various curriculum configurations based on 'what if' scenarios to assess the profitability of a course before it is offered
- Drills down to deliver information when, where and how it is required during planning and reporting processes
- Manages the cost and resource implications of courses and staffing
- Generates income and expenditure modelling using funding formula methodologies
- Analyses income and expenditure
- Provides clear auditability of curriculum planning
- Creates a business case to identify and understand viability of proposed courses
- User sensitive – only displays complexity to those users who need access to it
- Balances your organisation's claims with your actuals
- Allows users to model and track monetary value of submissions - turning claims into meaningful data
- Provides a clear picture of the actual payment you will receive
- Publishes data to your intranet using UNIT-e Columbus, allowing users to monitor the progress of their targets in a familiar and easy to use environment.



**buying
solutions**
supplier

If you would like to discover more about how Capita FHE and UNIT-e Business Manager can transform and ease your curriculum planning process and increase your funding, please contact your Capita FHE Account Manager or contact:

Capita Further and Higher Education
5 Mercian Close
Watermoor
Cirencester
Gloucestershire
GL7 1LT

t: 01285 647500
f: 01285 647599

enquiries@capitafhe.co.uk
www.capita-fhe.co.uk

About Capita Further and Higher Education

Capita is the leading supplier of information systems and services to the education sector.

Capita FHE has been working in the FE sector for over 20 years and has extensive knowledge and understanding of the requirements of education organisations in today's competitive and fast-paced world. Our software solutions aim to put you at the head of the game with cutting-edge technology placing key information and data at your fingertips, making important decisions and management activities smoother and more efficient.

Throughout England, Scotland and Wales, over 180 colleges, universities and training providers use the UNIT-e range of software and services to meet their information and funding management, and administrative needs.